

Presented by:

**Kelly Golby**

TRG-The Residential Group Rlty  
Phone: 604-218-5504

kelly@kellygolby.com



**Sold**  
**R2075000**  
Board: V  
Apartment/Condo

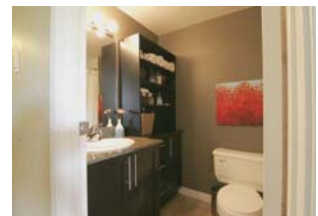
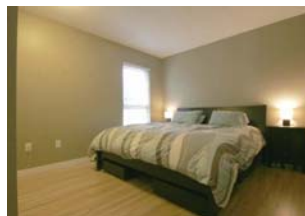
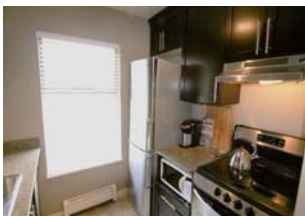
**210 288 E 14TH AVENUE**

Vancouver East  
Mount Pleasant VE  
V5T 2M6

Residential Attached

**\$435,000** (LP)

**\$476,000** (SP) 



**Bedrooms:** 1  
**Bathrooms (Full / Half):** 1 / 0  
**Floor Area (sq. ft.):** 650  
**Year Built (approx.):** 1983  
**Features:** ClthWsh/Dryr/Frdg/Stve/DW, Garage Door Opener

**Size of Lot (sq. ft.):** 0.00  
**Style:** Corner Unit, Upper Unit  
**Type of Parking:** Garage Underbuilding  
**Number of Parking Places:** 1

Villa Sophia. This large One Bedroom corner unit offers an open layout and large wrap around patio. Original building was built in 1983, but completely remodeled in 2010 inside and out to include balconies, plumbing, exterior repairs and paint, partial rain screen and updated common areas. The unit was fully renovated including S/S appliances, granite counters, new cabinets, in suite laundry, laminate flooring, new fixtures & plumbing. Includes one parking and one storage locker. Just a half block to vibrant Main Street in the trendy Mount Pleasant area. No Rental Restrictions. Pets Restricted to 1 only (max 30lbs). Public open house Sunday June 5 - 1:30p-4:30pm.